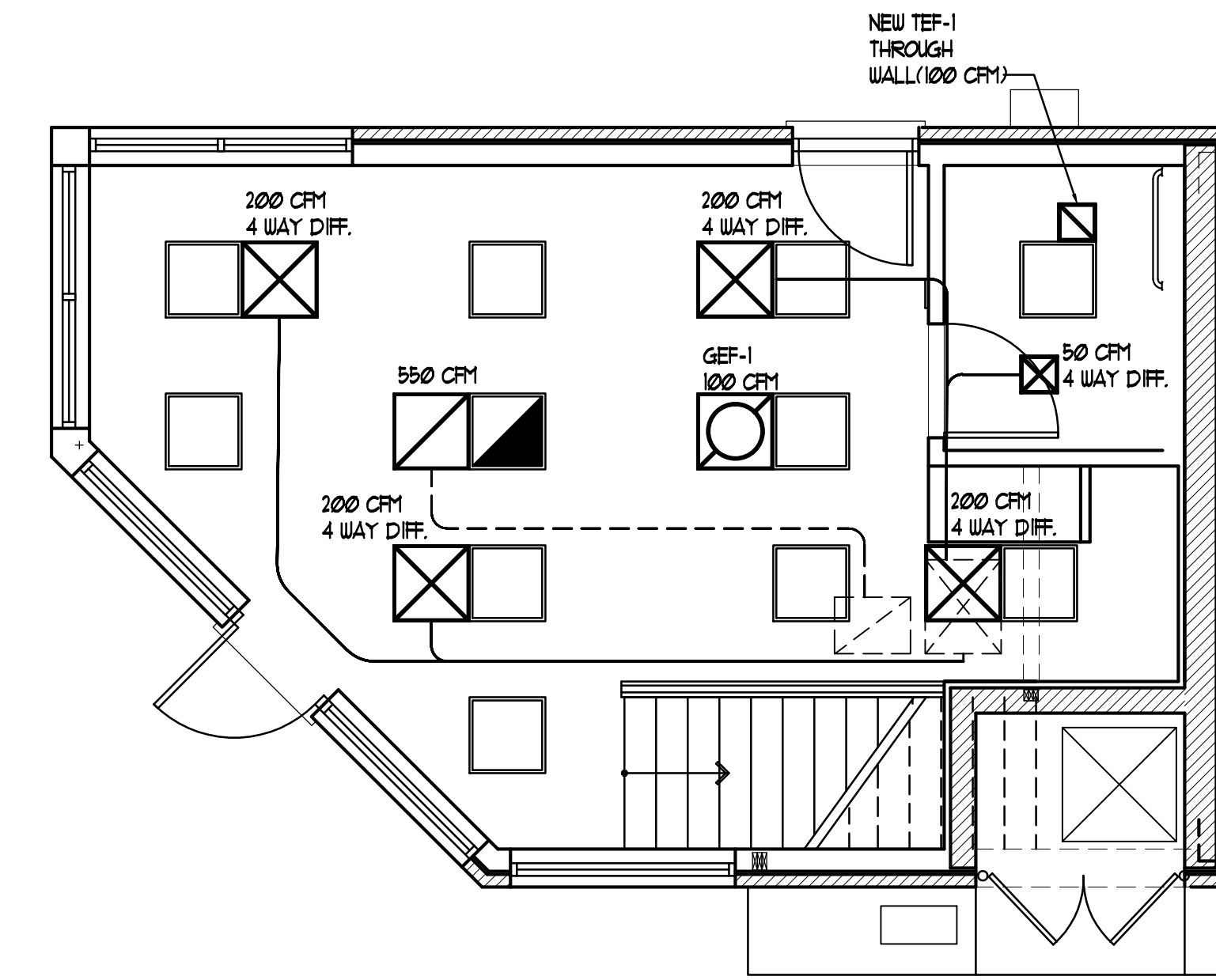
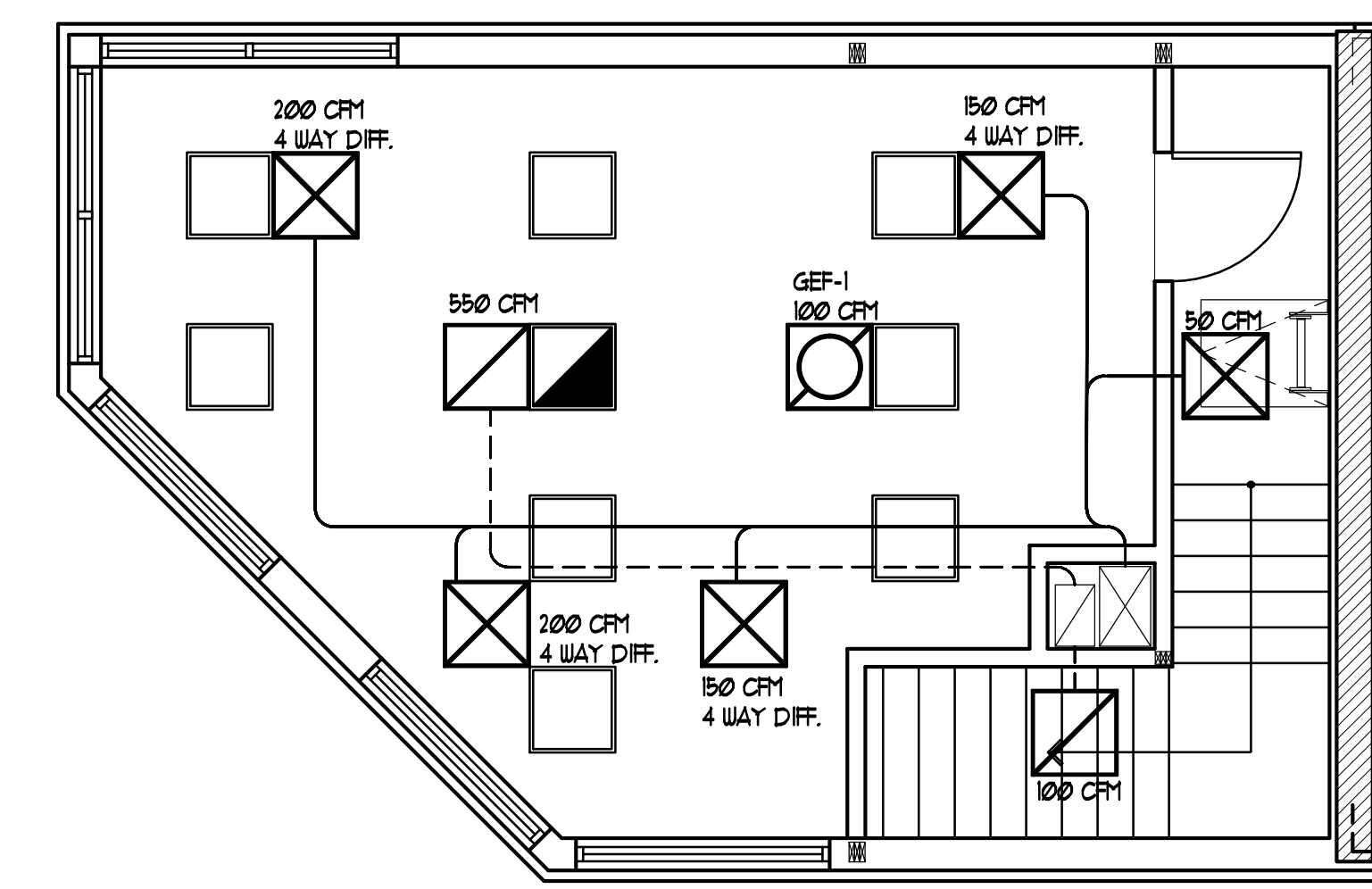


ROOM NAME	ROOM NO.	FLOOR AREA (SQ. FT.)	OCCUPANCY CLASSIFICATION	PEOPLE OUTDOOR AIRFLOW RATE IN BREATHING ZONE CFM/PERSON	PEOPLE OUTDOOR AIRFLOW RATE IN BREATHING ZONE CFM/SQFT	DEFAULT OCCUPANT DENSITY #/1000 SQFT	EXHAUST AIRFLOW RATE CFM/SQFT	OUTDOOR AIR FLOW RATE (CFM)
1st FLOOR	101	319	OFFICE	10 CFM	0.06	23		
TOILET	102	43	TOILET ROOMS		70		70	70
2nd FLOOR	201	346	OFFICE		0.6	41		
2nd FLR HALL	202	94			0.05	5		
TOTAL:								



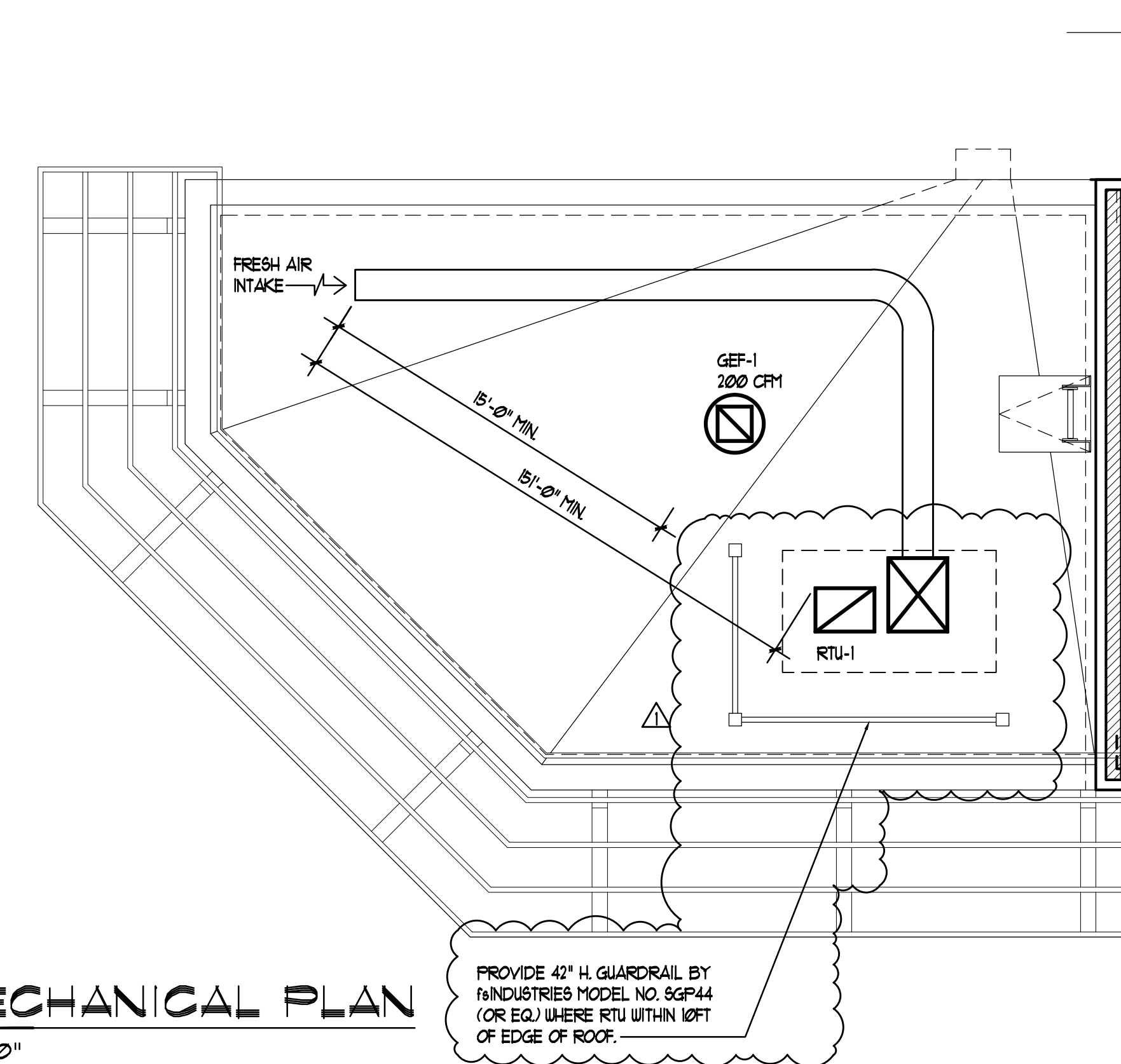
**1ST FLOOR MECHANICAL PLAN**

SCALE: 1/4" = 1'-0"



**2nd FLOOR MECHANICAL PLAN**

SCALE: 1/4" = 1'-0"



**ROOF MECHANICAL PLAN**

SCALE: 1/4" = 1'-0"

**RTU-1 ROOF TOP UNIT (EXISTING)**

THE ROOF TOP UNIT SHALL BE OF THE SINGLE PACKAGE COMBINATION ELEC. AIR COOLING AND GAS HEATING. THE UNIT SHALL BE CARRIER MODEL 48TCEB04BIA3-0B2A0. THE UNIT SHALL BE LOCATED ON THE ROOF AND SHALL BE MOUNTED ON A FACTORY PREFABRICATED ROOF CURB. TOTAL COOLING CAPACITY OF THE UNIT SHALL BE 15,000 BTU'S HEATING AND 89,000 COOLING. SENSIBLE COOLING CAPACITY SHALL BE 13.4 SEER BTU/HR AT CONDITIONS OF 1500 CFM FLOW ENTERING THE EVAPORATOR AT 61 F WET BULB TEMPERATURE AND CONDENSER AIR ENTERING TEMPERATURE OF 95 F DRY BULB.

1 COMPRESSOR IS PROVIDED  
THE INDOOR FAN IS OF THE CENTRIFUGAL TYPE, DRIVEN BY 12 HP, 208/230 V, 3 PHASE, 60 CYCLES MOTOR.

THE UNIT SHALL COME COMPLETE WITH:

- A. GRAVITY RELIEF EXHAUST
- B. 0 TO 100% FRESH AIR INTAKE ECONOMIZER WITH BIRD SCREEN

**GEF-1 GENERAL EXHAUST FAN**

VERTICAL DISCHARGE ROOF MOUNTED EXHAUST FAN. TOTAL CAPACITY SHALL BE 200 CFM AT 1/4 IN WATER STATIC PRESSURE, 1/4 HP MOTOR, 120 V, 1 PH, 60 CYCLES, 1050 RPM BELT DRIVEN. PROVIDE UNIT WITH BACK DRAFT DAMPER MODEL RF SOLID STATE SPEED CONTROL BIRD SCREEN, SAFETY DISCONNECT SWITCH AND ONE SPEED MOTOR. THE UNIT SHALL BE GREENHECK MODEL GB-101-4 OR AS APPROVED EQUAL.

**TEF-1 TOILET EXHAUST FAN**

VERTICAL DISCHARGE CEILING MOUNTED EXHAUST FAN. TOTAL CAPACITY WILL BE 100 CFM AT 1/8 IN WATER STATIC PRESSURE, 1/10 HP MOTOR, 120 V, 1 PH, 60 CYCLES DIRECT DRIVEN. PROVIDE UNIT WITH WALL CAP. THE WALL CAP SHALL BE WEATHER PROOF AND SHALL HAVE BUILT-IN BACK DRAFT DAMPER. THE UNIT SHALL BE BROAN MODEL 360 LOSONE VERT OR AS APPROVED EQUAL.

**ANTONIO FANIZZA ASSOC. LTD**  
ARCHITECTS  
2363 LECANER LANE  
DES PLAINES, ILLINOIS 60016  
TEL: (847) 823-5664 FAX: (847) 823-1664  
EMAIL: ANTONIO.FANIZZA@CCORCHITECTS.COM

© 2016 ANTONIO FANIZZA ASSOC. LTD. THESE DRAWINGS AND SPECIFICATIONS ARE PROPERTY OF ANTONIO FANIZZA ASSOC. LTD. THESE DRAWINGS ARE PREPARED FOR USE ON THIS SPECIFIC SITE AND FOR A SPECIFIC DATE AND SHALL NOT BE COPIED, OR REPRODUCED IN ANY FORM OR MANNER AVAILABLE WITHOUT WRITTEN AUTHORIZATION. UNAUTHORIZED USE IS NOT ALLOWED. IT IS FURTHER ADVISED PRIOR TO DRAWING USE, ALL FEES HAVE BEEN PAID IN FULL. FAILURE TO DO SO, THE USER WILL BE RESPONSIBLE FOR ALL COURT COST AND LEGAL FEES.

I HEREBY CERTIFY THAT THIS PLAN AND SPECIFICATION WAS PREPARED BY ME OR UNDER MY DIRECT SUPERVISION AND THAT I AM A DULY REGISTERED ARCHITECT UNDER THE LAWS OF THE STATE OF ILLINOIS AND THE VILLAGE OF SKOKIE COOK COUNTY AND ORDINANCE THEY ARE IN COMPLIANCE WITH ALL APPLICABLE CODES INCLUDING THE ENVIRONMENTAL BARBERS ACT (40-150) AND THE ILLINOIS ACCOUNTABILITY CODE (21.1-0000000) AS SANCTIONED BY MY HAND AND SEAL.

NO.	REVISION
1.	PER CITY COMMENTS 12/20/16
2.	PER CITY COMMENT #164281
3.	PER CITY COMMENT #166281
4.	PER DOT REQUIREMENTS #121281

CERTIFICATION AND SEAL

---

DRAWING NAME:  
**MECH. PLANS @ COMMERCIAL AREA**

PROJECT NAME:  
**KANDU TOWNHOMES**  
8163 LINCOLN AVE  
SKOKIE, ILLINOIS

released to const.  
job no. 1651  
scale AS SHOWN  
date 10.14.2016  
drawn by LW  
checked by AF  
sheet  
**M-1.1**

FOR PERMIT ONLY